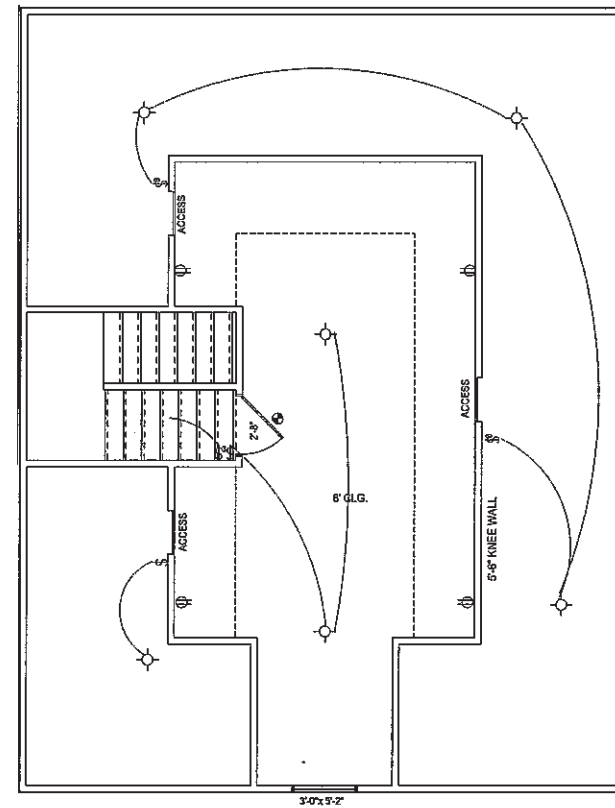


SECOND FLOOR PLAN ELECTRICAL

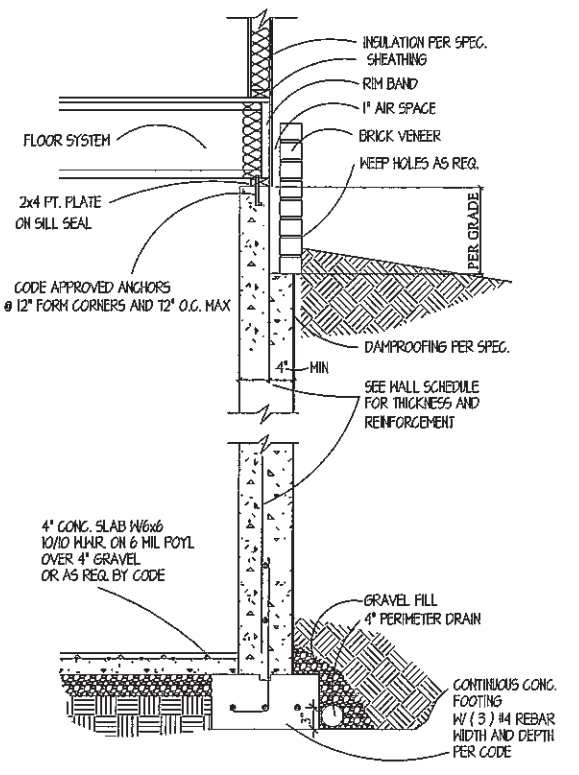
SCALE: 1/4" = 1'-0" (9'-1" CEILINGS)



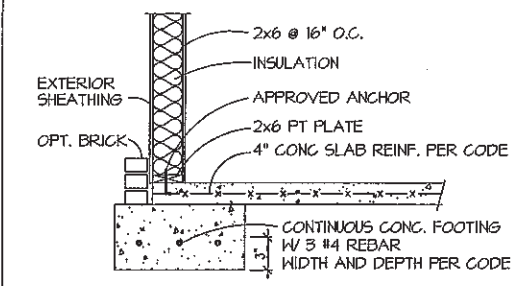
THIRD FLOOR PLAN-HIP ROOF ELECTRICAL

SCALE: 1/4" = 1'-0" (8'-1" CEILINGS)

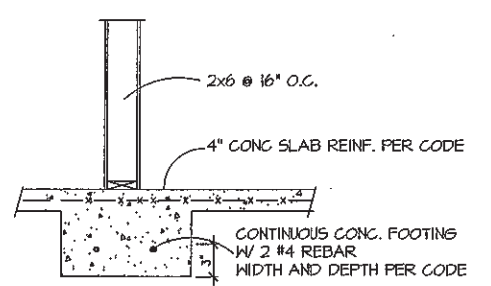
| ELECTRICAL SYMBOLS | |
|--------------------|------------------------------------|
| | COMMERCE OUTLET - SET 12\"/> |
| | COMMERCE OUTLET - 6\"/> |
| | COOK. OUTLET - 1/2\"/> |
| | COOK. OUTLET - WATER PROOF - 6\"/> |
| | GARAGE DOOR OPENER |
| | SWITCH, 3-WAY, 4-WAY - SET 36\"/> |
| | DUAL SWITCH STAKE |
| | LIGHT FIXTURE - CEILING MOUNT |
| | LIGHT FIXTURE - WALL MOUNT |
| | RECESSED LIGHT FIXTURE |
| | RECESSED CENBALL FIXTURE |
| | EXTERIOR FLOOD LIGHT |
| | FLUORESCENT LIGHT FIXTURE |
| | FLUORESCENT LIGHT |
| | DOORBELL CHIMES |
| | DOORBELL @ 32\"/> |
| | ELEC. METER |
| | TELEPHONE OUTLET |
| | T.V. OUTLET |
| | SMOKE DETECTOR |
| | EXHAUST FAN |
| | VENT TO EXT |
| | EXHAUST FAN / LIGHT COMBO |
| | FAN / LIFE COMBO |
| | VENT TO EXT |
| | DESIGNISHER OUTLET |
| | ELECTRIC PANEL |
| | CLING FAN |



1 DI BASEMENT SEC. W/ BRICK



2 DI EXT. FRAME WALL



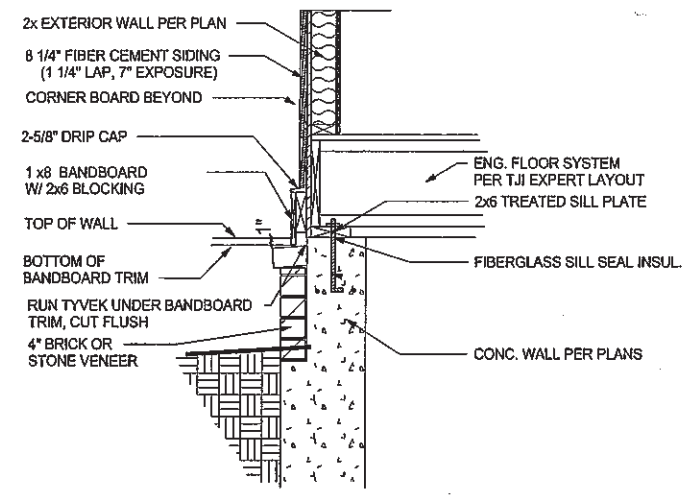
3 DI INT. LOAD WALL

BASEMENT WALL SCHEDULE

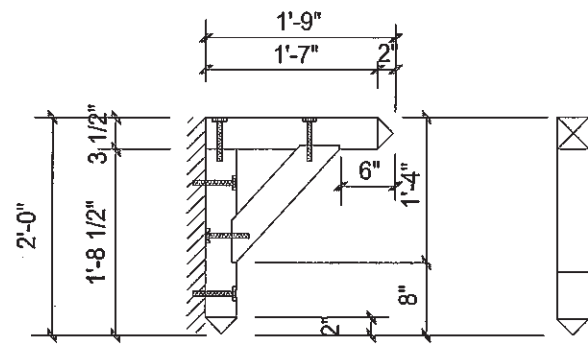
| POURED WALL HEIGHT (FT.) | MAXIMUM BACKFILL HEIGHT (FT.) | MINIMUM WALL THICKNESS | REINFORCING | FOOTING SIZE ONE STORY | FOOTING SIZE ONE STORY W/ BRICK | FOOTING SIZE TWO STORY | FOOTING SIZE TWO STORY W/ BRICK |
|--------------------------|-------------------------------|------------------------|---|------------------------|---------------------------------|------------------------|---------------------------------|
| 8'-0" | 7'-6" | 8" | VERTICAL #4 @ 16" O.C. HORIZONTAL #4 @ 12" O.C. #4 @ 8" O.C. GARAGE WALLS | 16" WIDE | 18" WIDE | 18" WIDE | 24" WIDE |
| 9'-0" | 8'-6" | 10" | VERTICAL #4 @ 16" O.C. HORIZONTAL #4 @ 12" O.C. | 18" WIDE | 20" WIDE | 20" WIDE | 24" WIDE |
| 10'-0" | 9'-6" | 10" | VERTICAL #4 @ 12" O.C. HORIZONTAL #4 @ 10" O.C. | 18" WIDE | 20" WIDE | 20" WIDE | 24" WIDE |

NOTES: 1. WALL DESIGN CRITERIA EQUIVALENT FLUID CAPACITY: 45 PSF
CONCRETE: 3000 PSI AT 28 DAYS
REINFORCING STEEL: GRADE 60

1. LOAD BEARING VALUE OF SOIL = 1500 PSF
2. SPREAD FOOTINGS SHALL BE AT LEAST 8 INCHES IN THICKNESS.
3. THE BOTTOM OF ALL EXTERIOR FOOTING SHALL BE MIN. 12 INCHES BELOW UNDISTURBED GROUND.

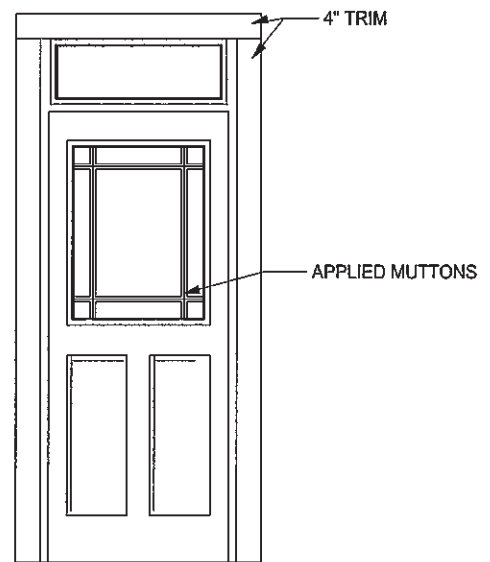
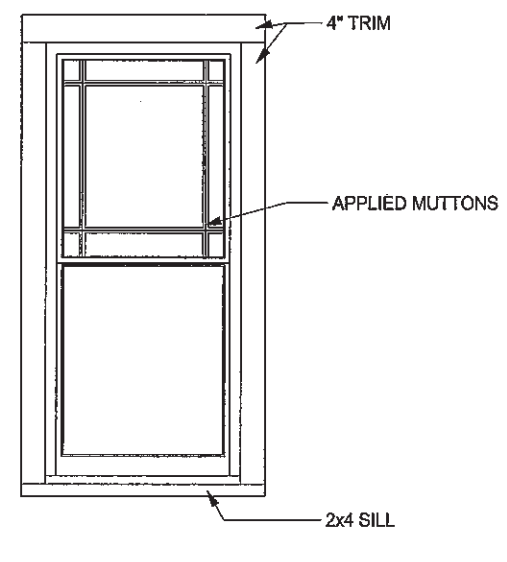


4 DI BASEMENT SEC. W/ BRICK

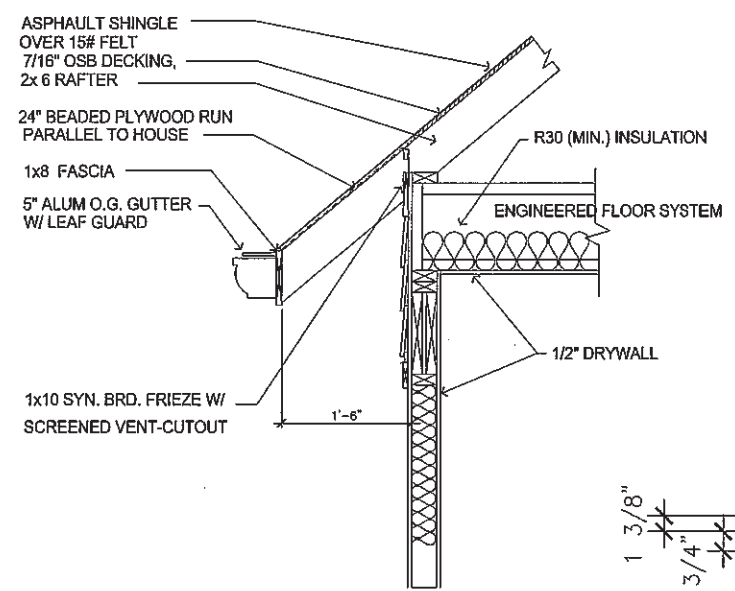


NOTES:
 - WOOD TO BE 3 1/2" x 3 1/2" SMOOTH CEDAR
 - FASTENERS TO BE 1/2" x 5 1/2" GALV. LAG BOLTS AND WASHERS
 - COUNTER SINK ALL FASTENERS
 - FILL ALL VISIBLE FASTENERS
 - PRIME AND PAINT PER OWNER'S INSTRUCTIONS

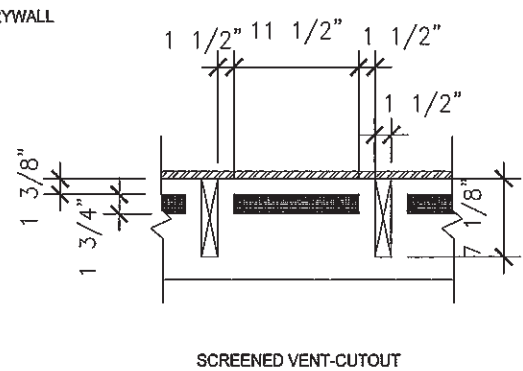
1
D2
TYPICAL ROOF BRACKET DETAIL
N.T.S.



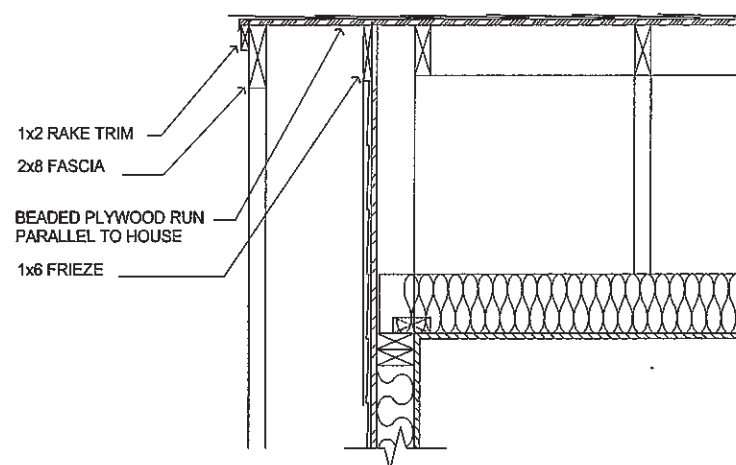
2
D2
WINDOW/DOOR EXT. TRIM DETAIL
N.T.S.



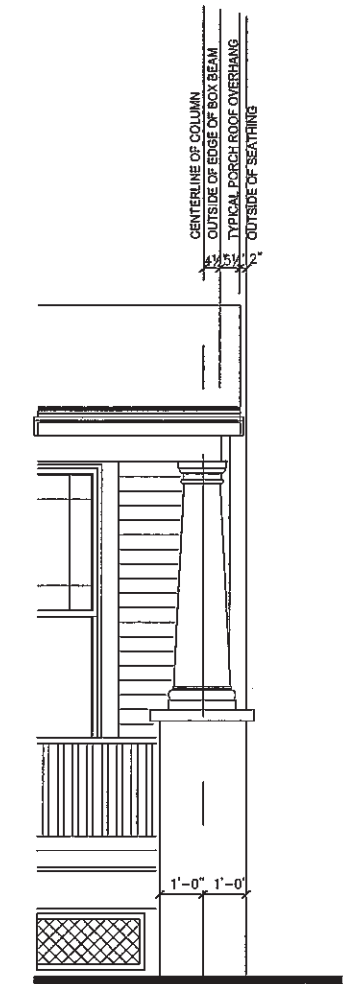
4
D2
TYPICAL OVERHANG DETAIL
N.T.S.



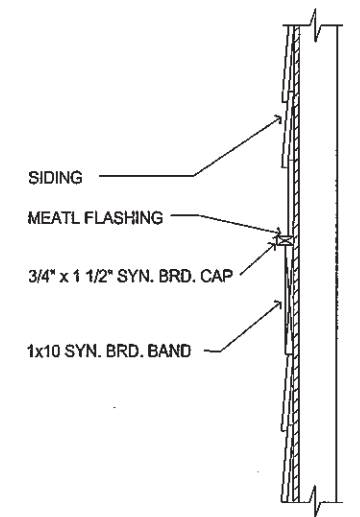
SCREENED VENT-CUTOUT



5
D2
TYPICAL OVERHANG DETAIL
N.T.S.



3
D2
PORCH DETAIL
N.T.S.



6
D2
TRIM BOARD DETAIL
N.T.S.

